

昏のワルツ

NHK「にんげんどキュメント」テーマ曲

加古 隆 ピアノアレンジ：加古 隆

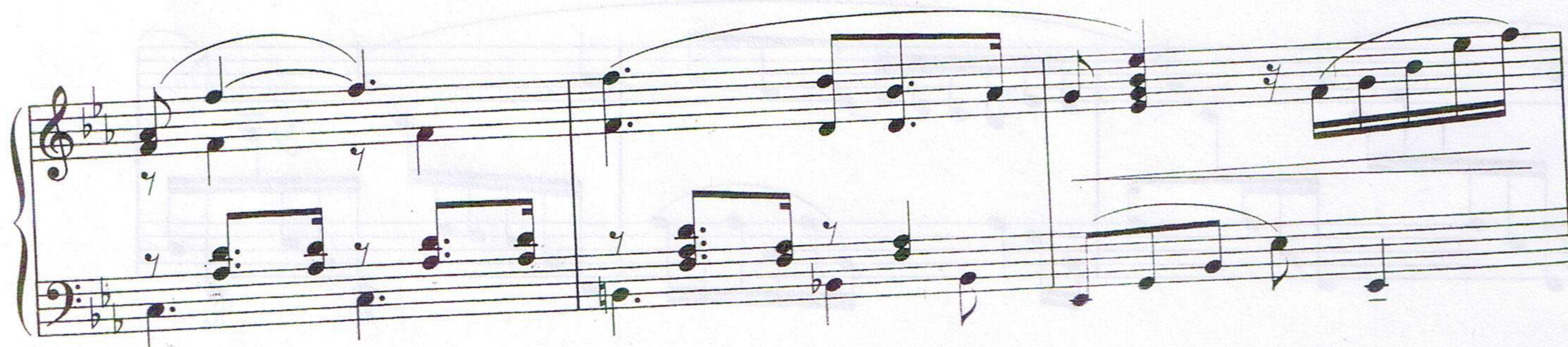
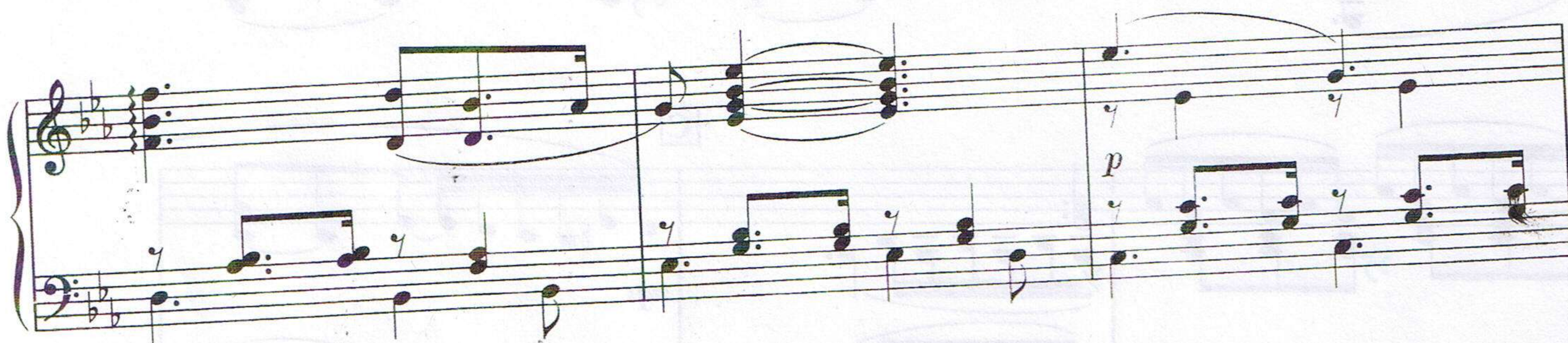
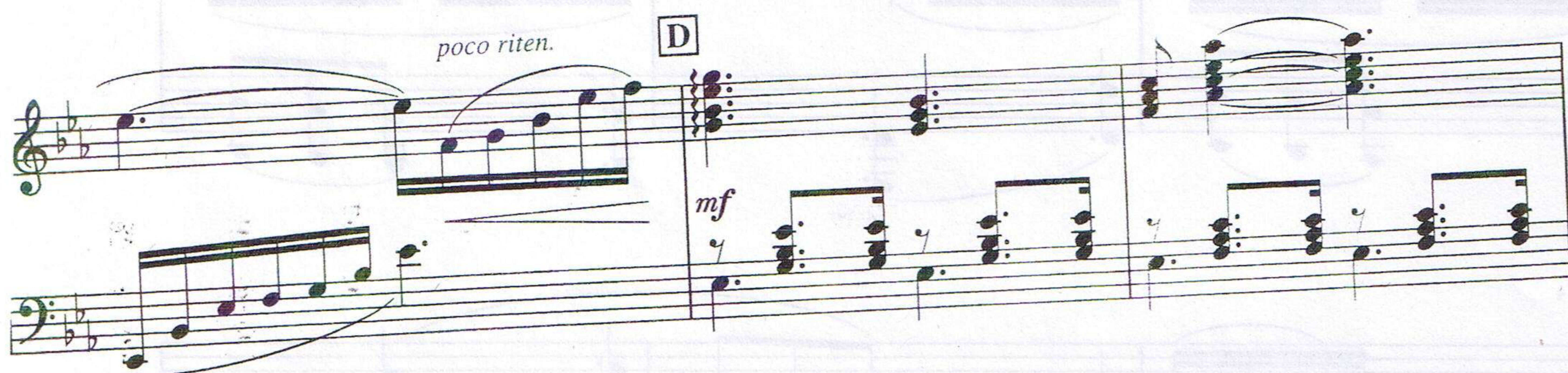
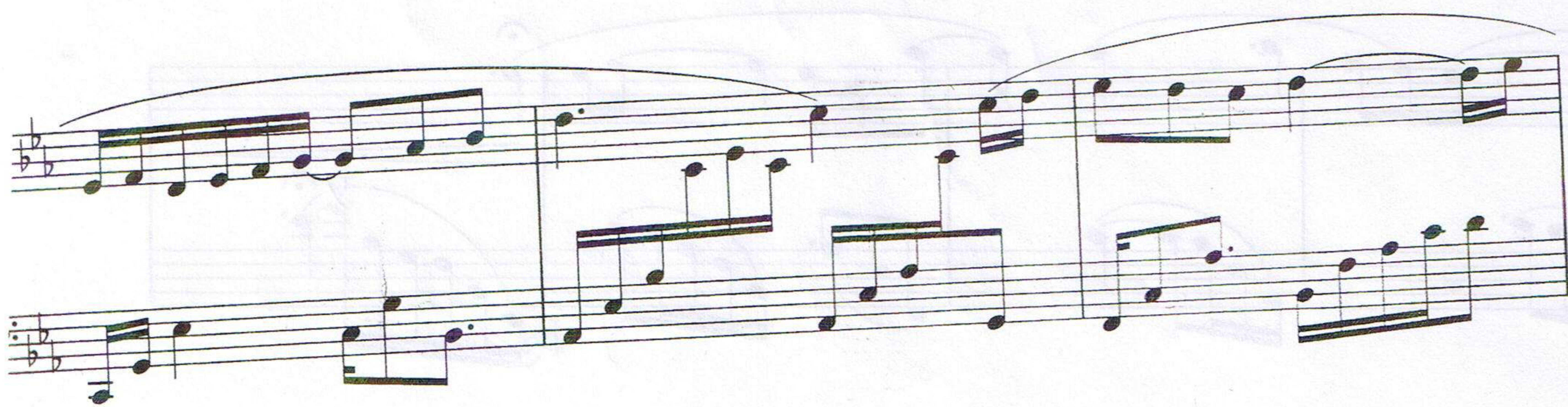
Allegro Moderato (♩ = 108)

The piano score is written for a single piano (piano solo) and is in 6/8 time. The key signature has two flats (B-flat and E-flat), indicating a key of B-flat major or D-flat minor. The tempo is marked 'Allegro Moderato' with a quarter note equal to 108 beats per minute. The score is divided into four systems, each with a grand staff (treble and bass clefs). The first system begins with a piano (*p*) dynamic marking. The second system includes a blue handwritten '72' below the bass staff. The third system features a 'rit.' (ritardando) marking above the treble staff and a blue handwritten '63' below the bass staff. The fourth system includes a section marked 'A a tempo' with a repeat sign, followed by a piano (*p*) dynamic marking. The score is characterized by flowing, melodic lines in the treble and bass, often connected by long, sweeping slurs. The notation includes various note values, rests, and articulation marks typical of a waltz.

rit.

B Allegro (♩ = 126)

C



E

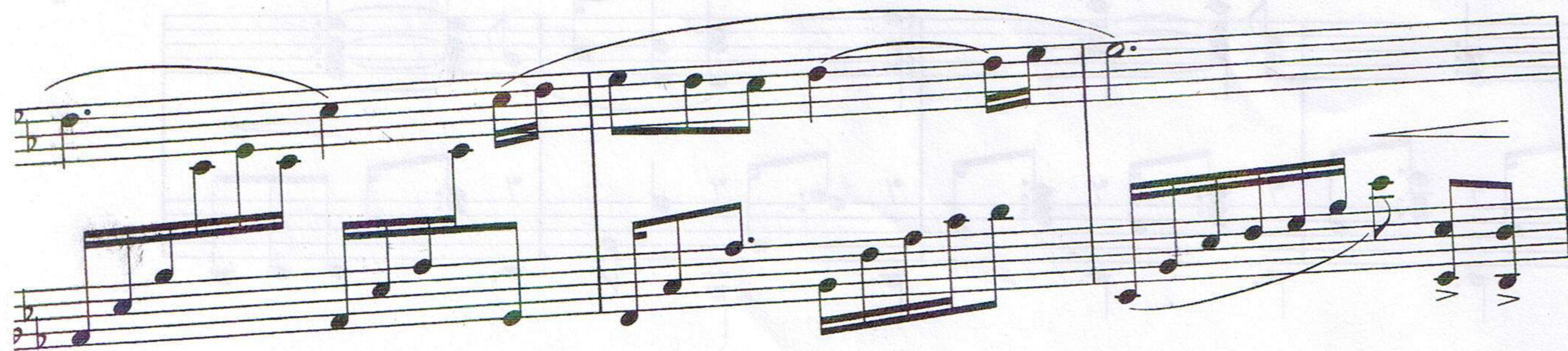
System E contains measures 1 through 4. The treble clef part begins with a whole rest, followed by a half note G4, and then a half note F#4. The bass clef part starts with a half note G2, followed by a half note A2, and then a half note B2. The first measure is marked with a forte *f* dynamic. The second measure features a half note G4 in the treble and a half note A2 in the bass. The third measure has a half note F#4 in the treble and a half note B2 in the bass. The fourth measure concludes with a half note G4 in the treble and a half note A2 in the bass.

System F contains measures 5 through 8. The treble clef part begins with a half note G4, followed by a half note F#4, and then a half note E4. The bass clef part starts with a half note G2, followed by a half note A2, and then a half note B2. The first measure is marked with a mezzo-piano *mp* dynamic. The second measure features a half note G4 in the treble and a half note A2 in the bass. The third measure has a half note F#4 in the treble and a half note B2 in the bass. The fourth measure concludes with a half note G4 in the treble and a half note A2 in the bass.

F

System G contains measures 9 through 12. The treble clef part begins with a half note G4, followed by a half note F#4, and then a half note E4. The bass clef part starts with a half note G2, followed by a half note A2, and then a half note B2. The first measure is marked with a forte *f* dynamic. The second measure features a half note G4 in the treble and a half note A2 in the bass. The third measure has a half note F#4 in the treble and a half note B2 in the bass. The fourth measure concludes with a half note G4 in the treble and a half note A2 in the bass.

System H contains measures 13 through 16. The treble clef part begins with a half note G4, followed by a half note F#4, and then a half note E4. The bass clef part starts with a half note G2, followed by a half note A2, and then a half note B2. The first measure is marked with a forte *f* dynamic. The second measure features a half note G4 in the treble and a half note A2 in the bass. The third measure has a half note F#4 in the treble and a half note B2 in the bass. The fourth measure concludes with a half note G4 in the treble and a half note A2 in the bass.



elec



45: