

SOPRANO

Right As Rain

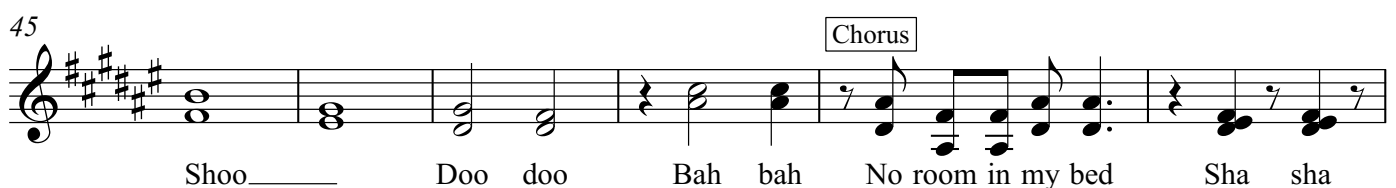
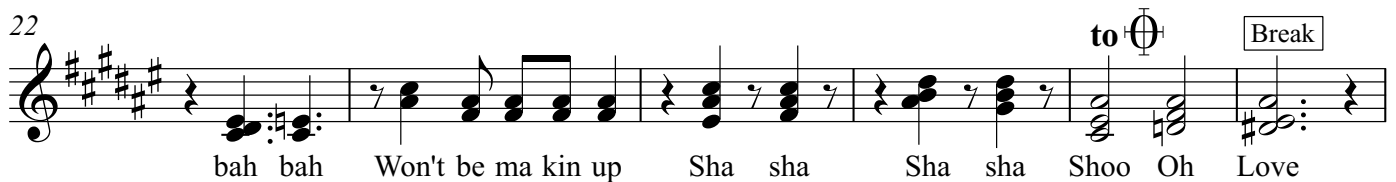
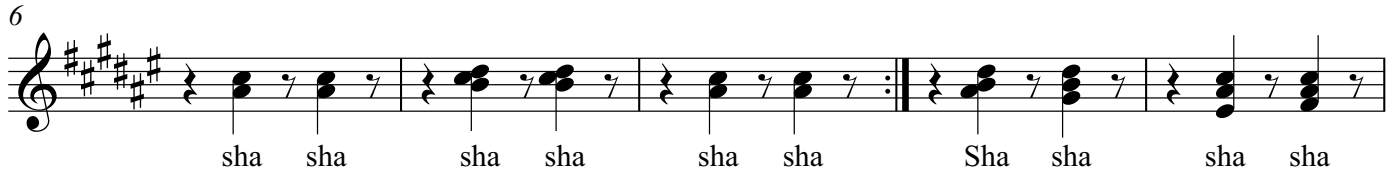
Adele

Arr. by Shela Jeong
Spring 2011

$\text{♩} = 130$

Intro

Verse 1



V.S.

51



57

Chorus



62



ALTO

Right As Rain

Adele

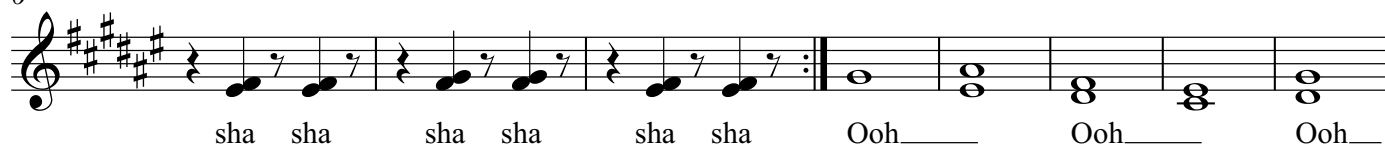
Arr. by Shela Jeong

Spring 2011

♩ = 130



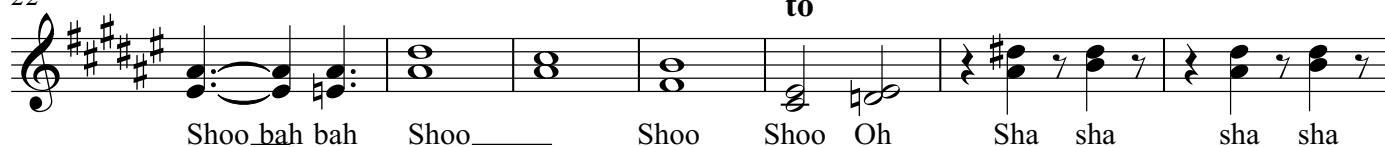
6



14



22



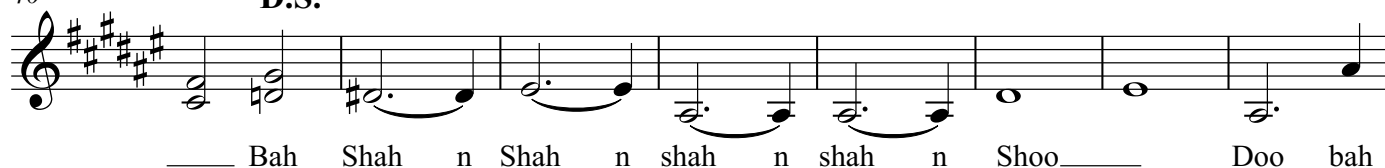
29



34



40



48



57



V.S.

61

A musical staff for an Alto part, measures 61-64. The key signature is D major (two sharps). The melody consists of eighth notes in measures 61 and 62, followed by quarter notes in measures 63 and 64. The lyrics "Oh oh Love" are written below the staff, aligned with the final notes of measures 63 and 64. The staff ends with a double bar line.

TENOR

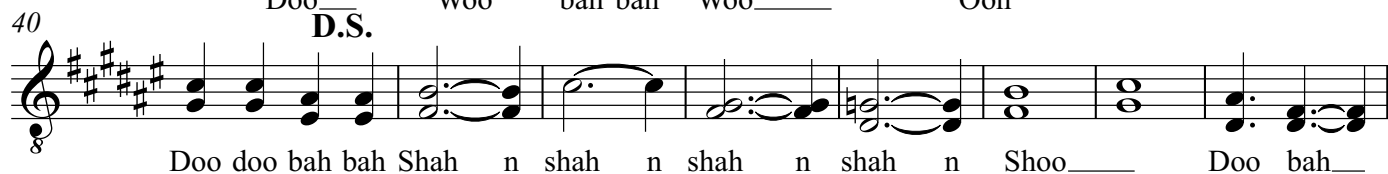
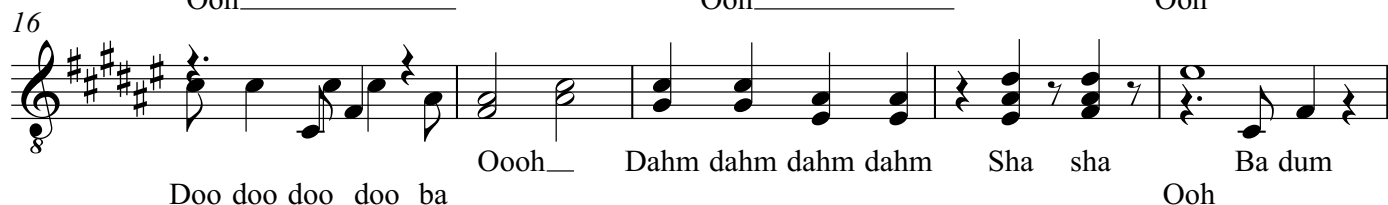
Right As Rain

Adele


Arr. by Shela Jeong

Spring 2011

♩ = 130

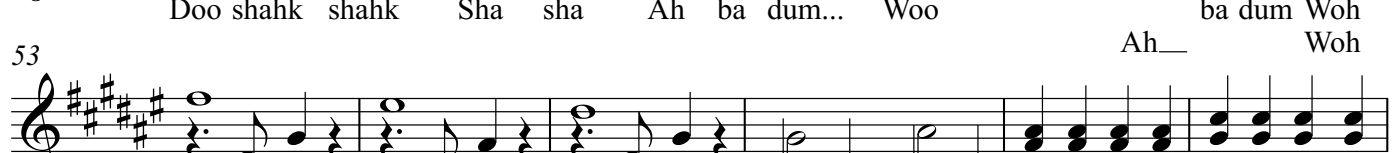


48



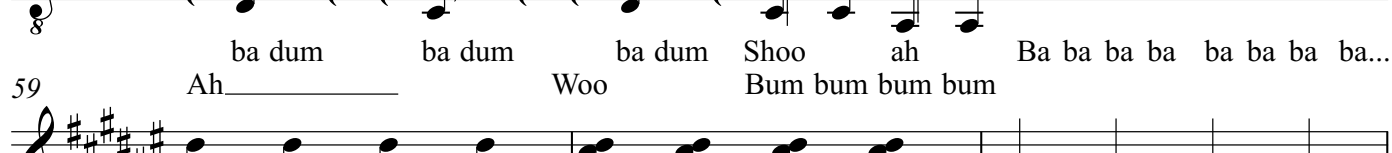
Doo shahk shahk Sha sha Ah ba dum... Woo ba dum Woh

53



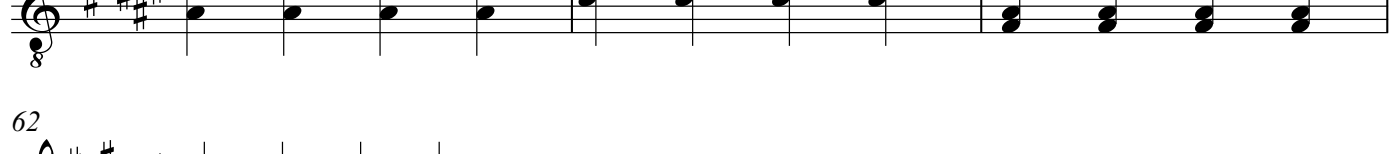
ba dum ba dum ba dum Shoo ah Ba ba ba ba ba ba ba ba...

59



Ah_____ Woo Bum bum bum bum

62



Shoo Oh Oh Love

BASS

Right As Rain

Adele

Arr. by Shela Jeong

Spring 2011

♩ = 130



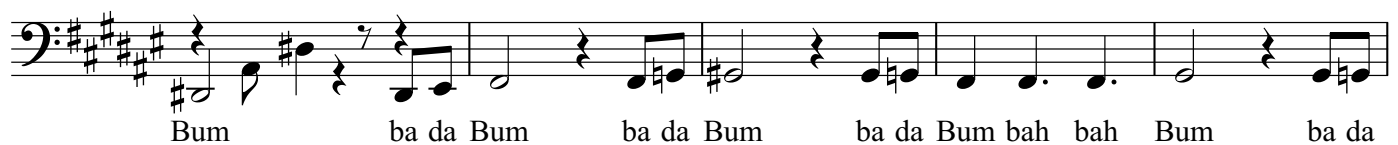
7



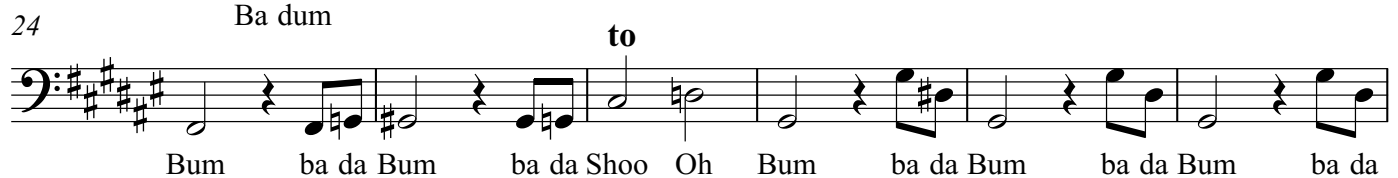
13



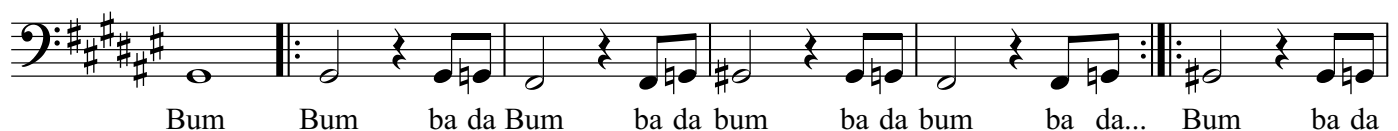
19



24



30



36

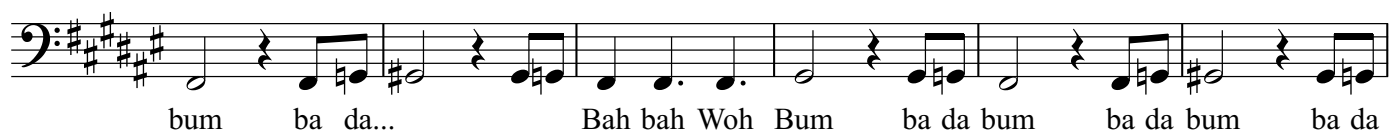
D.S.



42



50



V.S.

56



61

