

Black Beauty

Written by Danny Elfman

Arranged by Joseph Rozell

Allegretto

6

mf

6

11

15

20

This system contains measures 20 through 23. Measure 20 begins with a treble clef, a key signature of one sharp (F#), and a 3/4 time signature. The bass line starts with a half note G2, followed by quarter notes A2, B2, and C3. The treble line has a half note D3, followed by quarter notes E3, F#3, and G3. Measure 21 features a half note D3 in the bass and a half note E3 in the treble. Measure 22 shows a half note F#3 in the bass and a half note G3 in the treble. Measure 23 concludes with a half note A3 in the bass and a half note B3 in the treble.

24

This system contains measures 24 through 28. Measure 24 starts with a treble clef, a key signature of one sharp (F#), and a 3/4 time signature. The bass line begins with a half note G2, followed by quarter notes A2, B2, and C3. The treble line has a half note D3, followed by quarter notes E3, F#3, and G3. Measure 25 features a half note D3 in the bass and a half note E3 in the treble. Measure 26 shows a half note F#3 in the bass and a half note G3 in the treble. Measure 27 concludes with a half note A3 in the bass and a half note B3 in the treble. Measure 28 features a half note C4 in the bass and a half note D4 in the treble.

29

This system contains measures 29 through 33. Measure 29 starts with a treble clef, a key signature of one sharp (F#), and a 3/4 time signature. The bass line begins with a half note G2, followed by quarter notes A2, B2, and C3. The treble line has a half note D3, followed by quarter notes E3, F#3, and G3. Measure 30 features a half note D3 in the bass and a half note E3 in the treble. Measure 31 shows a half note F#3 in the bass and a half note G3 in the treble. Measure 32 concludes with a half note A3 in the bass and a half note B3 in the treble. Measure 33 features a half note C4 in the bass and a half note D4 in the treble.

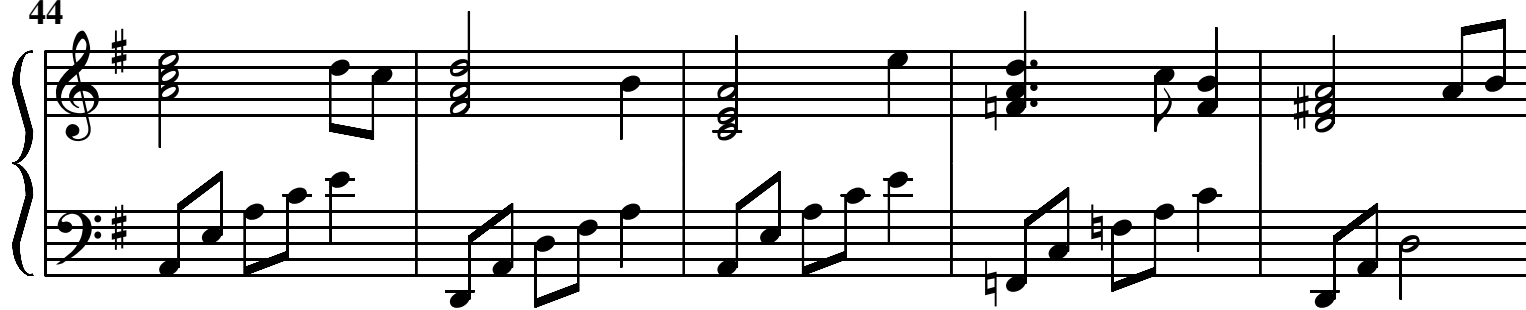
34

This system contains measures 34 through 38. Measure 34 starts with a treble clef, a key signature of one sharp (F#), and a 3/4 time signature. The bass line begins with a half note G2, followed by quarter notes A2, B2, and C3. The treble line has a half note D3, followed by quarter notes E3, F#3, and G3. Measure 35 features a half note D3 in the bass and a half note E3 in the treble. Measure 36 shows a half note F#3 in the bass and a half note G3 in the treble. Measure 37 concludes with a half note A3 in the bass and a half note B3 in the treble. Measure 38 features a half note C4 in the bass and a half note D4 in the treble.

39

This system contains measures 39 through 43. Measure 39 starts with a treble clef, a key signature of one sharp (F#), and a 3/4 time signature. The bass line begins with a half note G2, followed by quarter notes A2, B2, and C3. The treble line has a half note D3, followed by quarter notes E3, F#3, and G3. Measure 40 features a half note D3 in the bass and a half note E3 in the treble. Measure 41 shows a half note F#3 in the bass and a half note G3 in the treble. Measure 42 concludes with a half note A3 in the bass and a half note B3 in the treble. Measure 43 features a half note C4 in the bass and a half note D4 in the treble.

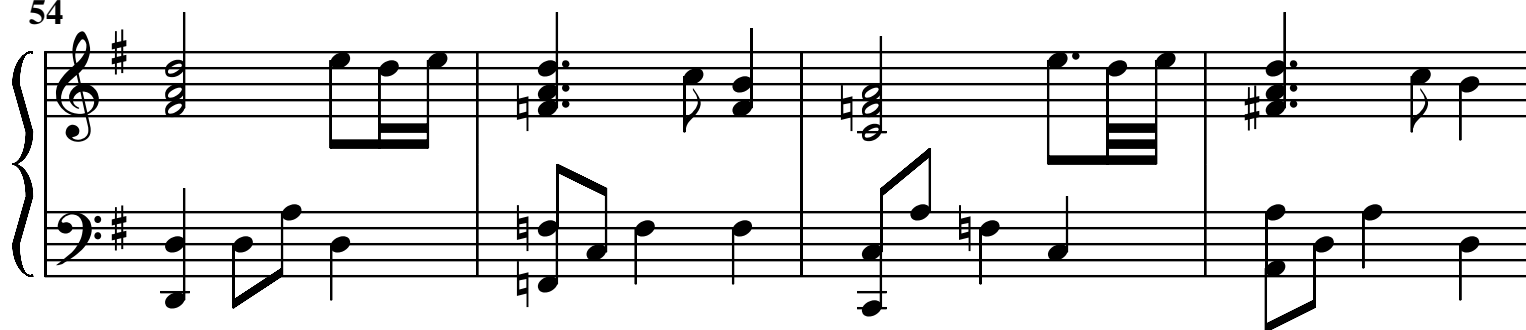
44



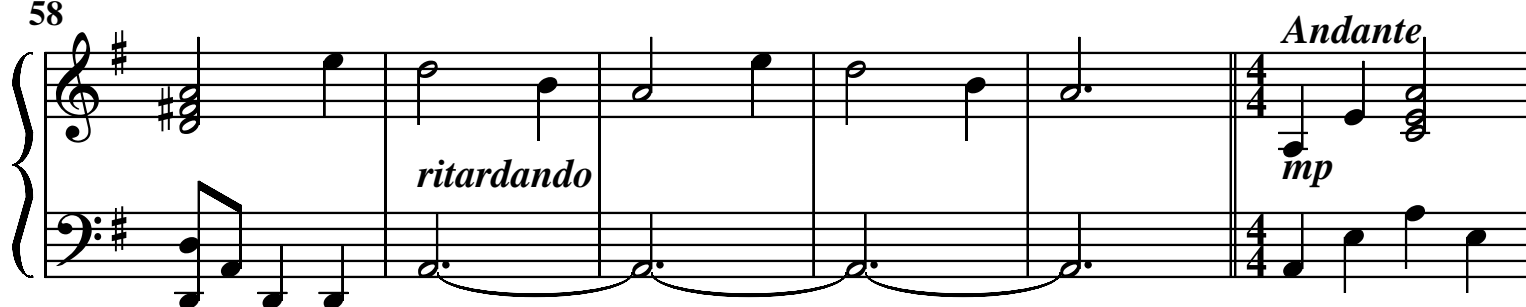
49



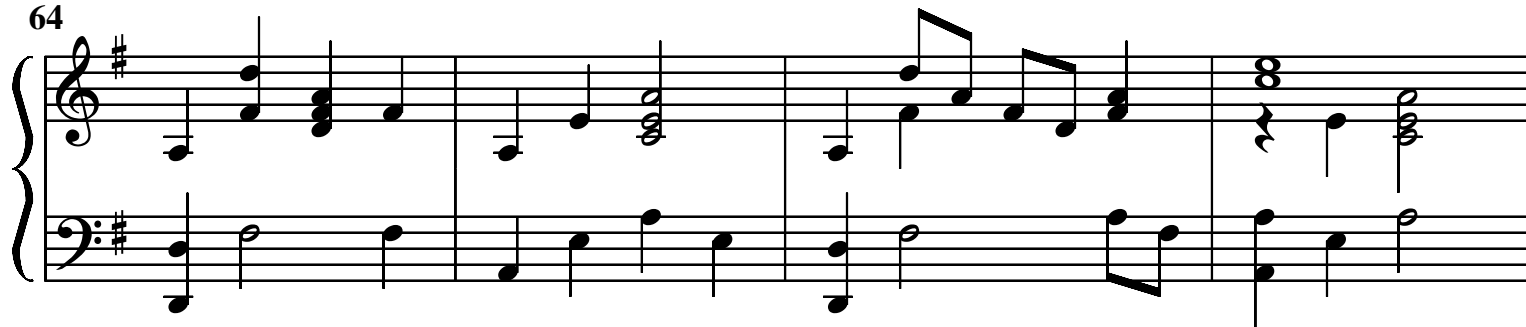
54



58



64



68

Measures 68-71 of a musical score in G major. The right hand features a melody with eighth and quarter notes, including a triplet of eighth notes in measure 69. The left hand provides a harmonic accompaniment with chords and single notes. Measure 71 ends with a fermata on a half note in the right hand.

72

Measures 72-75 of the musical score. Measure 72 begins with a whole rest in the right hand. The right hand continues with a melody, featuring a triplet of eighth notes in measure 73. The left hand maintains the accompaniment. Measure 75 concludes with a fermata on a half note in the right hand.

76

Measures 76-79 of the musical score. Measure 76 starts with a whole rest in the right hand. The right hand melody includes a half note with a fermata in measure 77. The left hand accompaniment consists of chords and single notes. Measure 79 ends with a fermata on a half note in the right hand.

80

Measures 80-83 of the musical score. Measure 80 features a triplet of eighth notes in the right hand. The word *ritardando* is written in the right hand of measure 82. Measure 83 ends with a triplet of eighth notes in the right hand and a fermata on a half note in the left hand.

84

Measures 84-87 of the musical score. Measure 84 has a half note with a fermata in the right hand. Measure 85 features a half note with a fermata in the right hand and a half note with a fermata in the left hand. Measures 86 and 87 are whole rests in both hands, ending with a double bar line.