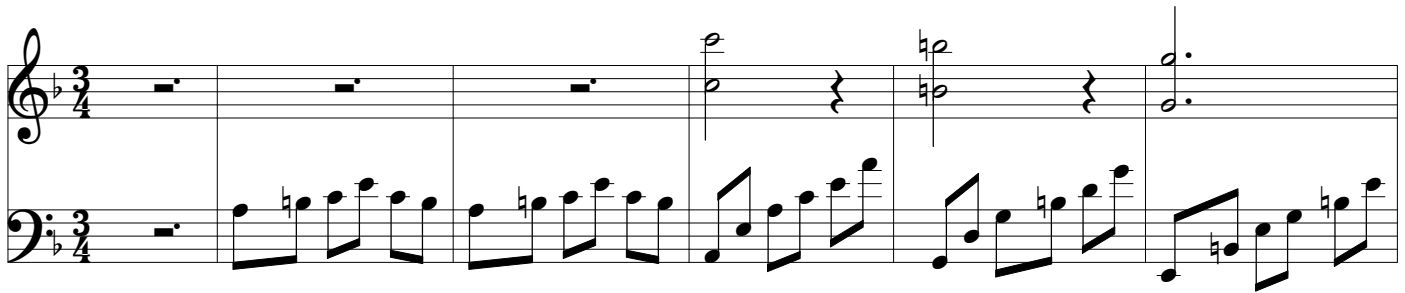


# NOCTURNE

BILLY JOEL

1



25

A musical score for the song 'The Rose Tree'. It features a treble and bass staff. The treble staff begins with a treble clef and a key signature of one flat (B-flat). The bass staff begins with a bass clef and a key signature of one flat (B-flat). The melody is written in the treble staff, and the bass line is written in the bass staff. The score includes various musical notations such as notes, rests, and bar lines.

31

A musical score for the song 'The Rose Tree'. It consists of two staves, a treble staff and a bass staff, both in the key of B-flat major (indicated by two flats). The time signature is 4/4. The melody is written in the treble staff, and the accompaniment is in the bass staff. The melody starts with a whole rest in the first measure, followed by a series of eighth and quarter notes. The accompaniment provides a steady rhythmic foundation with eighth and quarter notes. The piece concludes with a double bar line and repeat dots.

37

A musical score for the song 'The Rose Tree'. It consists of two staves: a treble staff and a bass staff. The treble staff begins with a treble clef, a key signature of one flat (B-flat), and a common time signature (C). The first measure of the treble staff contains a whole note chord consisting of a B-flat, a D, and a G. The subsequent measures of the treble staff contain whole notes, each with a different chord: F major (F, A, C), E-flat major (E-flat, G, B-flat), D major (D, F, A), and C major (C, E, G). The bass staff begins with a bass clef and a key signature of one flat (B-flat). The first measure of the bass staff contains a whole note chord consisting of a B-flat, a D, and a G. The subsequent measures of the bass staff contain whole notes, each with a different chord: F major (F, A, C), E-flat major (E-flat, G, B-flat), D major (D, F, A), and C major (C, E, G). The score is written in a simple, clear style with no lyrics.

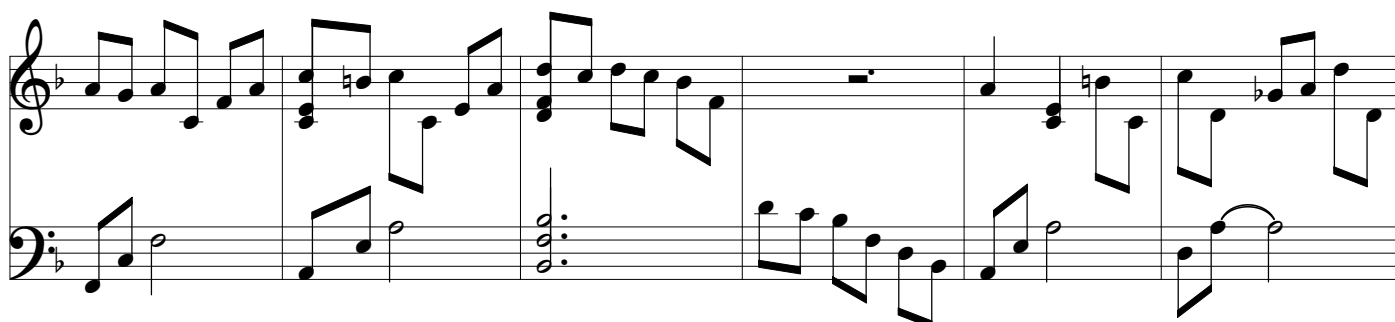
42

A musical score for the song 'The Rose Tree'. It consists of two staves: a treble clef staff at the top and a bass clef staff at the bottom. The treble staff contains a melody with a key signature of one flat (Bb) and a 4/4 time signature. The melody starts with a quarter rest, followed by a quarter note G4, a quarter note A4, and a quarter note Bb4. This is followed by a half note G4, a half note F4, and a half note E4. The melody continues with a quarter note D4, a quarter note C4, and a quarter note Bb3. The bass staff contains a bass line that starts with a quarter note G3, a quarter note F3, and a quarter note E3. This is followed by a half note D3, a half note C3, and a half note Bb2. The bass line continues with a quarter note A2, a quarter note G2, and a quarter note F2. The score is written in a simple, clear font.

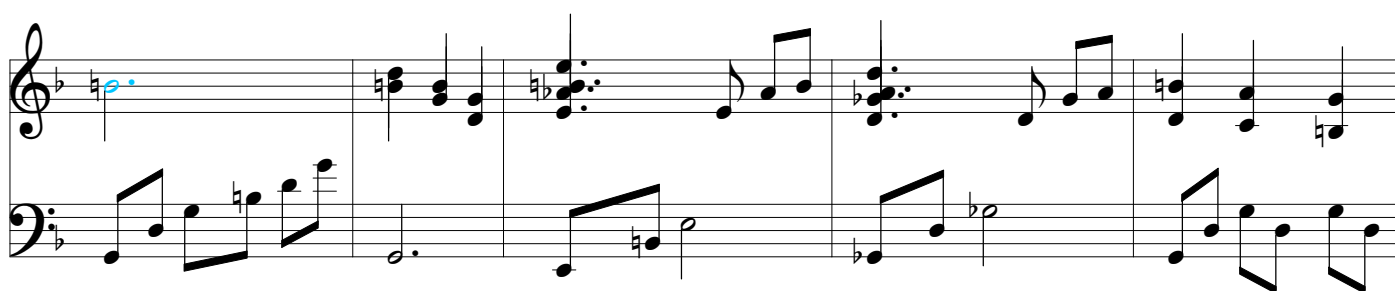
48



54



60



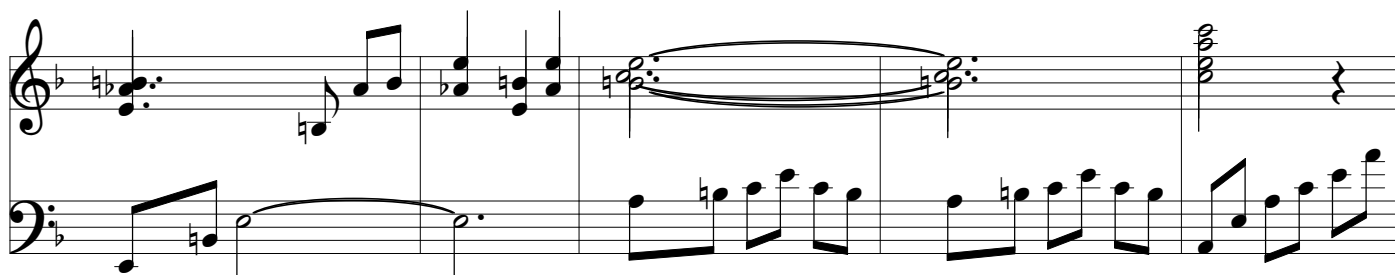
65



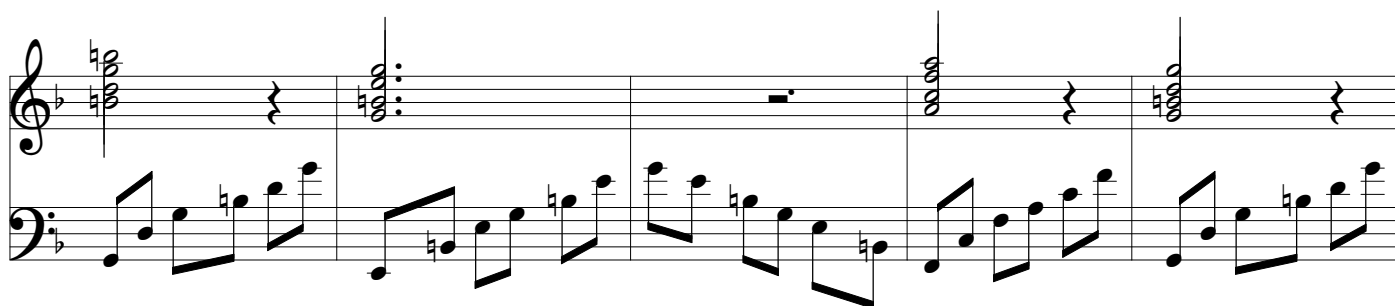
70



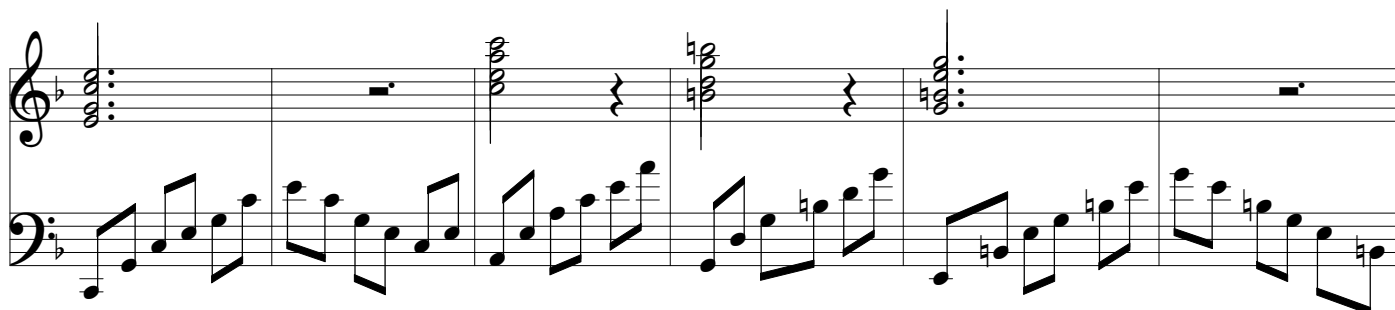
76



81



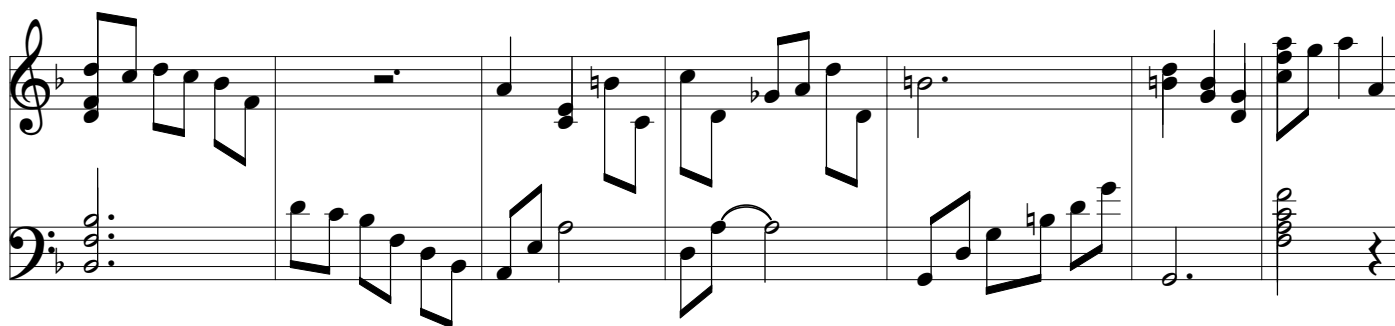
86



92



98



105

