

EUROPA

Universal Music Publishing GmbH
(c) Universal/Light Music
Santana, Carlos/Coster, Tom

Piano
Sheets.ru
архив нот



Sheet music for Europa (Eb-Stimme) in 4/4 time. The music is written for piano and includes various chords and dynamics.

Chords and Dynamics:

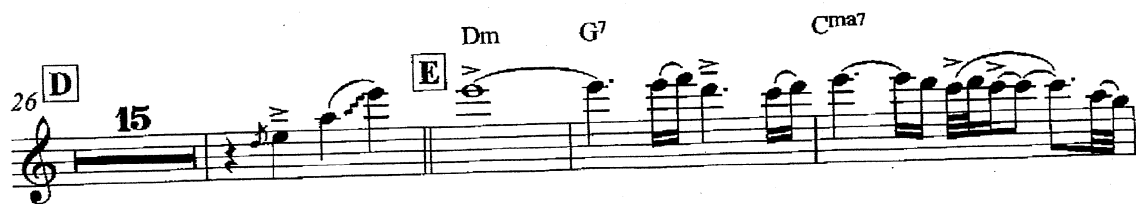
- Chords: F/G, G⁷, Cma⁷, Fma⁷, Dm⁶/E, E⁷, Am, B, F/G, G⁷, Cma⁷, Fma⁷, Dm⁶/E, E⁷, A, Dm, G⁷, Cma⁷, Fma⁷.
- Dynamics: *mf*, *f*.

Section Markers:

- A** (Measures 1-4)
- B** (Measures 10-13)
- C** (Measures 18-21)

Measure Numbers: 5, 8, 10, 14, 18.

Other Notations: Trills, triplets (3), and various articulation marks.



[illegible]

64 Am Dm

Am Dm

68 Am [^] Dm

72 Am Dm

Am Dm

76 Am Dm

Am Dm

83 