

Kiss Me Thru The Phone

Presented by:

www.SheetMusicHits.com

Soulja Boy Tell 'em
Featuring Sammie

A musical score for the song 'The Rose Tree'. It consists of two staves, a treble staff and a bass staff, both in the key of D major (two sharps) and 4/4 time. The treble staff begins with a whole rest, followed by a quarter rest, then a series of eighth notes: D4, E4, F#4, G4, A4, B4, A4, G4, F#4, E4, D4. This is followed by another quarter rest and a final whole rest. The bass staff begins with a half note D3, followed by a half note E3. The second measure contains a whole rest. The third measure contains a half note D3 and a half note E3.

A musical score for the song "The Rose Tree". It consists of two staves, a treble staff and a bass staff, both in the key of D major (indicated by two sharps: F# and C#). The time signature is 4/4. The treble staff begins with a treble clef and a key signature of two sharps. The melody starts with a quarter rest, followed by a series of eighth and sixteenth notes. The bass staff begins with a bass clef and a key signature of two sharps. It starts with a whole rest, followed by a series of quarter and eighth notes. The score is written in a standard musical notation style with a white background and black notes.

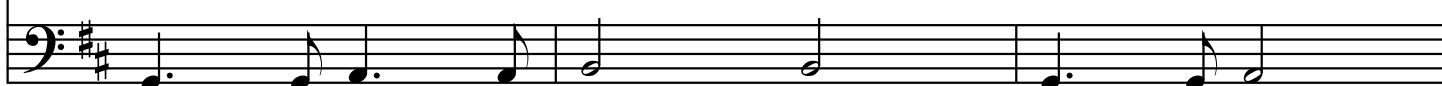
A musical score for the song 'The Rose Tree'. It consists of two staves: a treble staff and a bass staff, both in the key of D major (indicated by two sharps: F# and C#). The treble staff begins with a treble clef and a key signature of two sharps. The melody is written in a simple, folk-like style, featuring eighth and sixteenth notes. The bass staff begins with a bass clef and a key signature of two sharps. The bass line is simpler, primarily using quarter and eighth notes. The score is presented on a white background with black musical notation.

The musical score for 'The Rose Tree' is presented in two systems. The first system consists of a treble clef staff with a key signature of one sharp (F#) and a common time signature (C). The melody begins with a quarter note G4, followed by eighth notes A4 and B4, then a quarter note C5, a quarter rest, and a quarter note D5. This is followed by a beamed eighth-note pair (E5, F#5), a quarter note G5, a quarter note F#5, a quarter note E5, a quarter note D5, a quarter note C5, a quarter note B4, a quarter note A4, and a quarter note G4. The second system consists of a bass clef staff with the same key signature and time signature. The bass line begins with a half note G3, followed by a half note F#3, a quarter note E3, a quarter note D3, a quarter note C3, a quarter note B2, a quarter note A2, and a quarter note G2.

13



13



16



16



19



19



22



22



25



25



28



28

This system contains measures 28, 29, and 30. The treble clef staff begins with a whole rest in measure 28, followed by a quarter note G4 in measure 29, and a quarter note A4 in measure 30. The bass clef staff features a half note G3 in measure 28, a quarter note A3 in measure 29, and a quarter note B3 in measure 30. The key signature has two sharps (F# and C#).

31



31

This system contains measures 31, 32, and 33. The treble clef staff has a quarter note G4 in measure 31, a quarter note A4 in measure 32, and a quarter note B4 in measure 33. The bass clef staff has a half note G3 in measure 31, a quarter note A3 in measure 32, and a quarter note B3 in measure 33. The key signature has two sharps (F# and C#).

34



34

This system contains measures 34, 35, and 36. The treble clef staff has a quarter note G4 in measure 34, a quarter note A4 in measure 35, and a quarter note B4 in measure 36. The bass clef staff has a half note G3 in measure 34, a quarter note A3 in measure 35, and a quarter note B3 in measure 36. The key signature has two sharps (F# and C#).

37



37

This system contains measures 37, 38, and 39. The treble clef staff has a quarter note G4 in measure 37, a quarter note A4 in measure 38, and a quarter note B4 in measure 39. The bass clef staff has a half note G3 in measure 37, a quarter note A3 in measure 38, and a quarter note B3 in measure 39. The key signature has two sharps (F# and C#).

40



40

This system contains measures 40, 41, and 42. The treble clef staff has a quarter note G4 in measure 40, a quarter note A4 in measure 41, and a quarter note B4 in measure 42. The bass clef staff has a half note G3 in measure 40, a quarter note A3 in measure 41, and a quarter note B3 in measure 42. The key signature has two sharps (F# and C#).

43



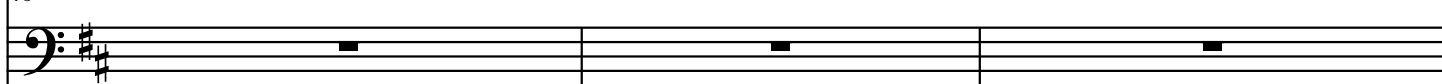
43



46



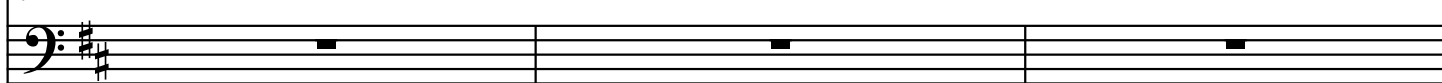
46



49



49



52



52



55



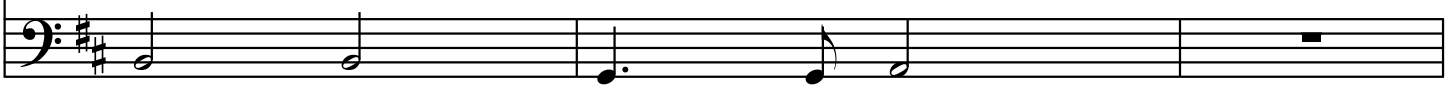
55



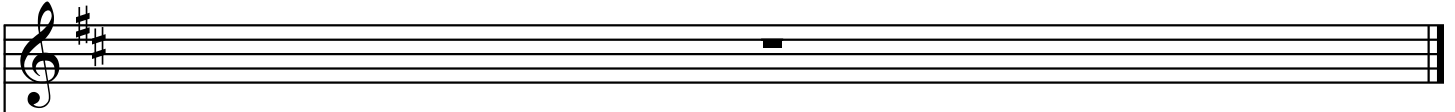
58



58



61



61

