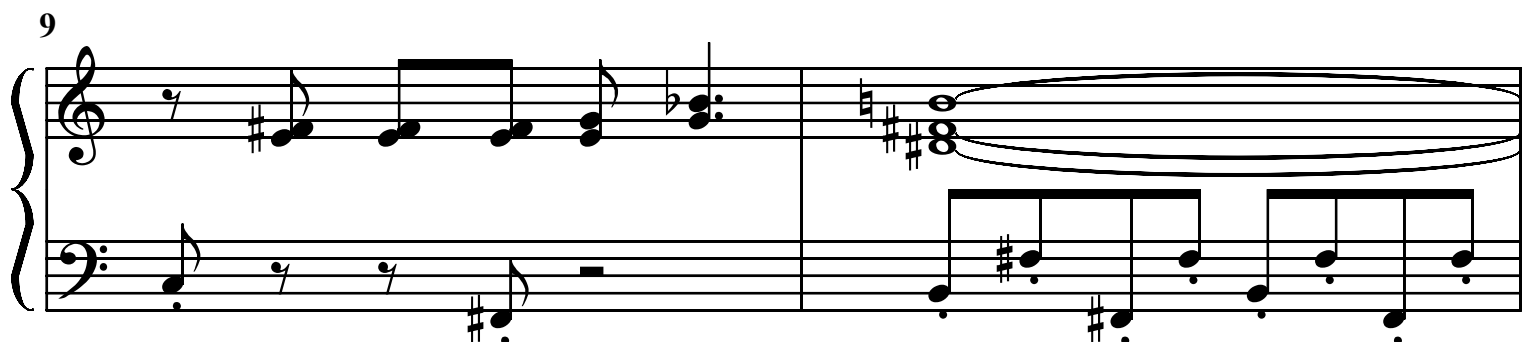
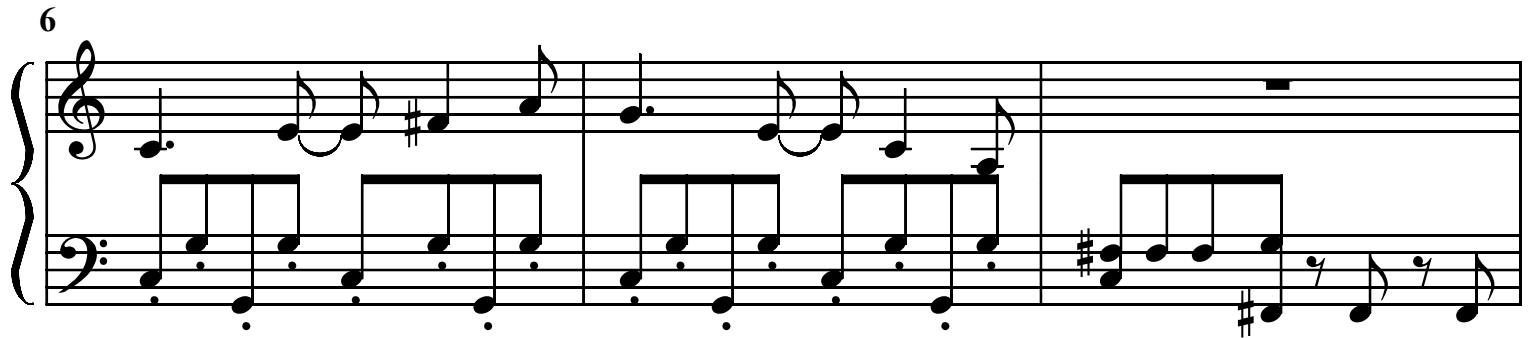
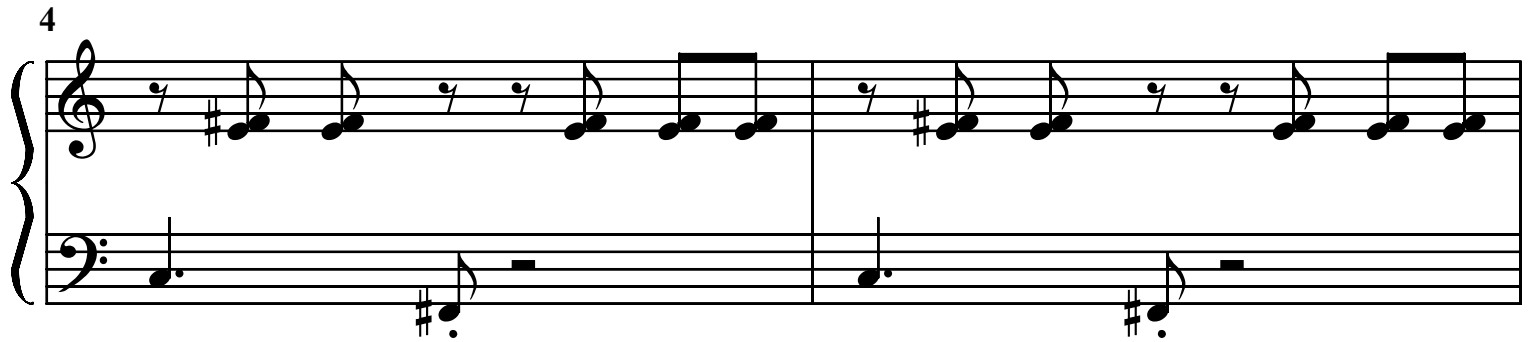
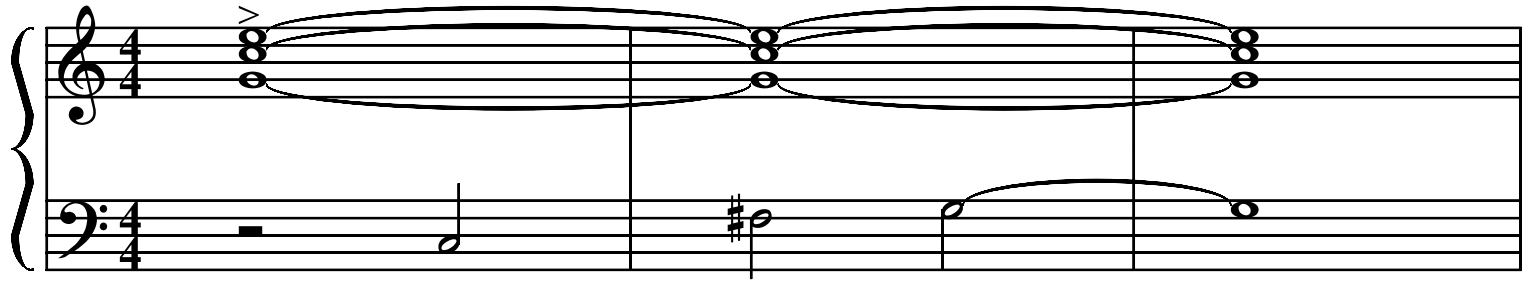


Piano Template

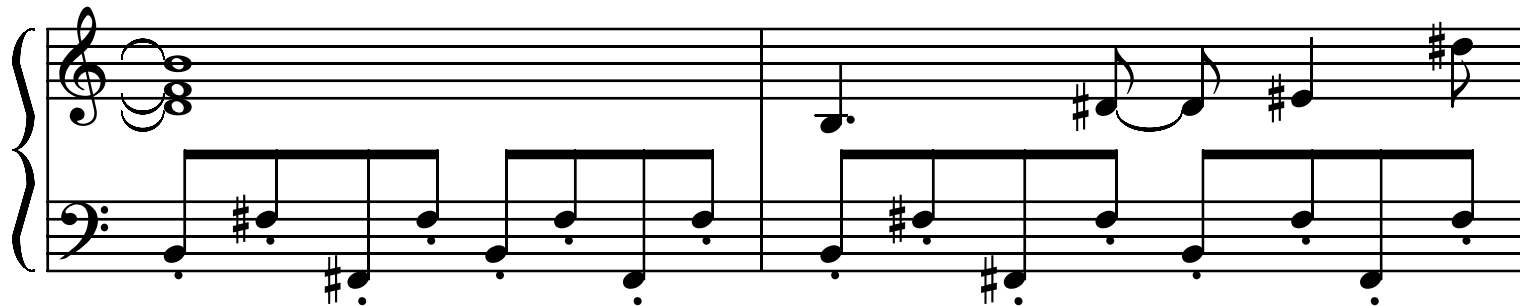


<Name>

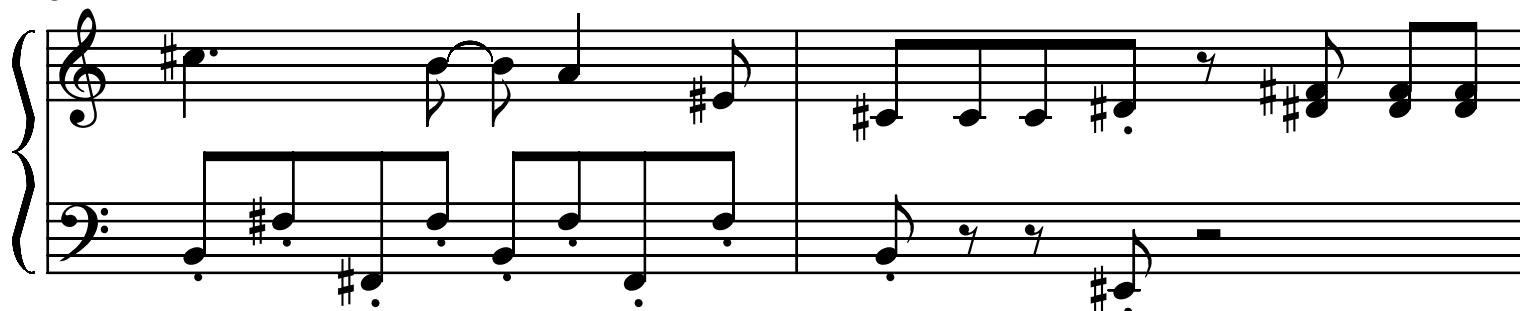
♩ = 168



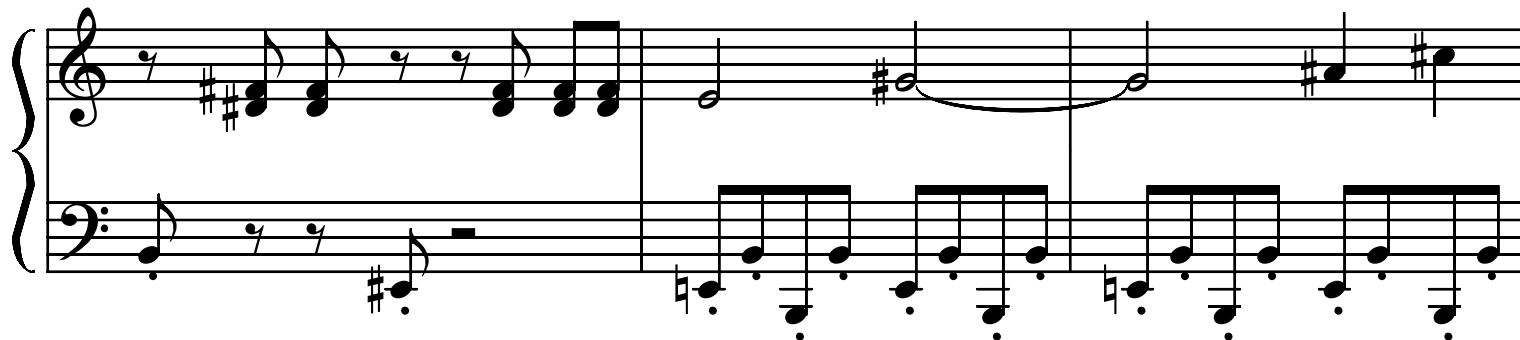
11



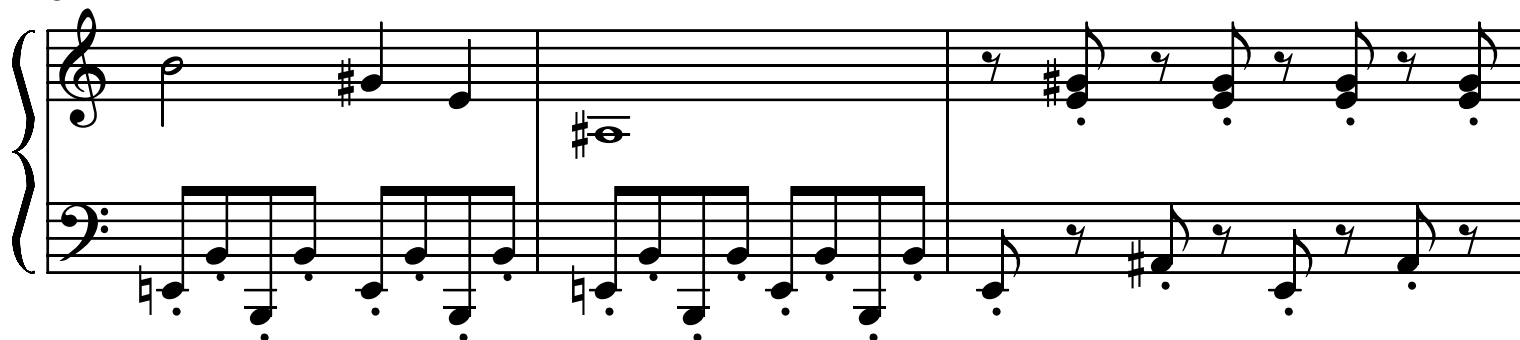
13



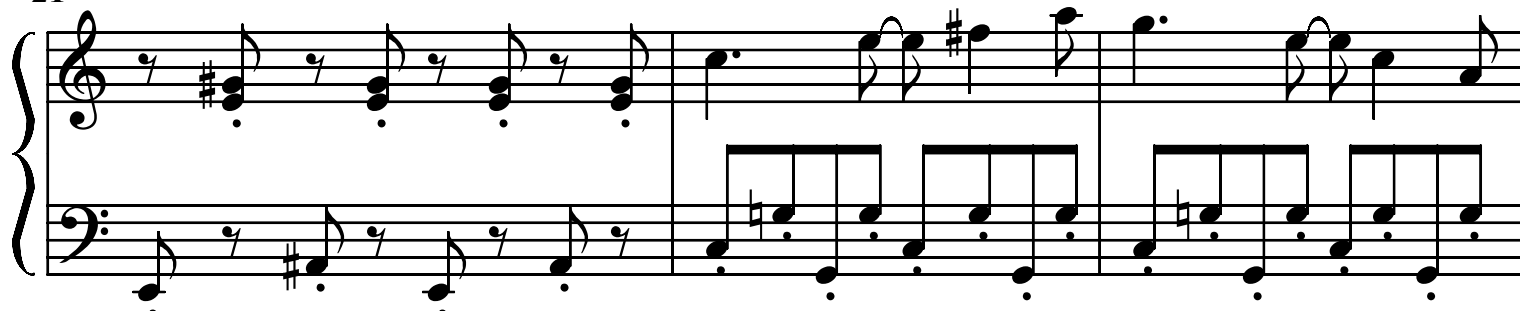
15



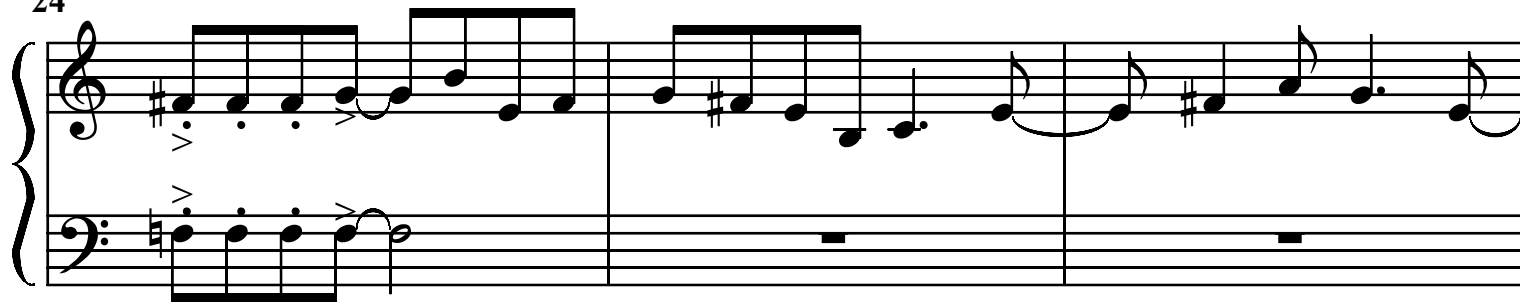
18



21



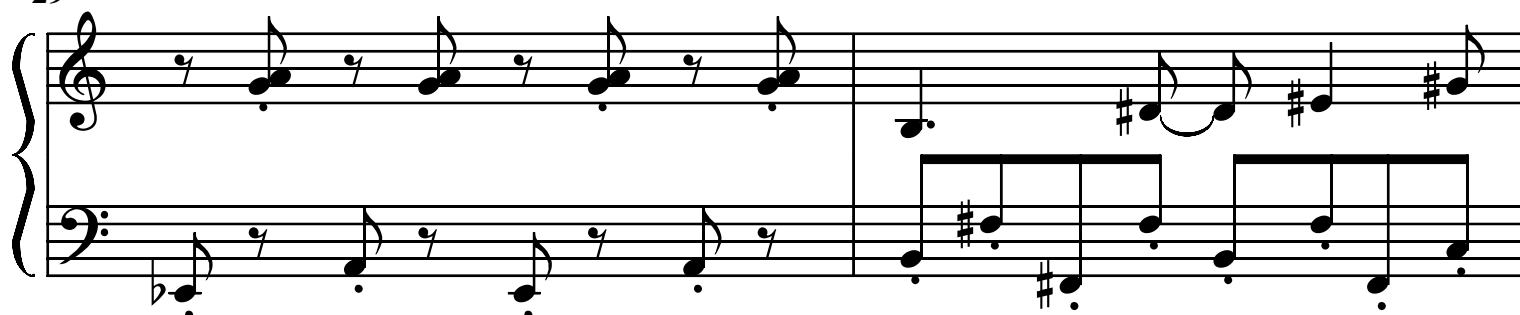
24



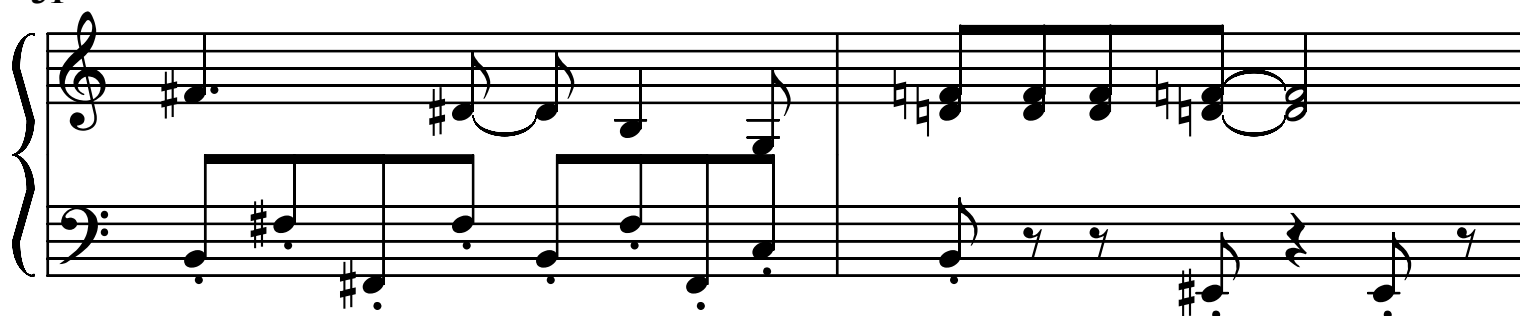
27



29



31



33



35

A musical score for the song 'The Rose Tree'. It features a treble and bass staff with a grand staff bracket on the left. The key signature has one sharp (F#) and the time signature is 3/4. The melody is in the treble staff, and the bass staff provides a harmonic accompaniment. The score is divided into three measures. The first measure shows the beginning of the melody and accompaniment. The second measure continues the melody and accompaniment. The third measure shows the end of the melody and accompaniment. The melody consists of eighth and quarter notes, while the accompaniment consists of eighth and quarter notes. The score is written in a simple, clear style.

38

The image shows a musical score for a piano piece, labeled "Example 6-10". It consists of two staves, one in treble clef and one in bass clef, both with a key signature of one sharp (F#). The music is written in 4/4 time. The treble staff begins with a series of eighth notes ascending from G4 to D5, followed by a descending sequence. The bass staff features a steady eighth-note accompaniment pattern starting on F#3. The piece concludes with a final chord in the treble staff consisting of G4, A4, B4, and C5.

41

A musical score for the song "The Rose Tree". It features a piano introduction in 3/4 time, indicated by a treble clef and a key signature of one flat (B-flat). The introduction consists of a series of chords in the right hand and single notes in the left hand. The melody begins in the second measure with a half note G4, followed by a quarter note A4, and then a half note Bb4. The left hand provides a simple harmonic accompaniment with single notes.

44

A musical score for the song 'The Rose Tree'. The score is written for a piano, with a treble and bass staff. The key signature is one flat (B-flat), and the time signature is 2/4. The melody is in the treble staff, and the accompaniment is in the bass staff. The score consists of two measures. The first measure shows the piano introduction with a treble staff starting on a whole note G4 and a bass staff starting on a whole note F4. The second measure shows the vocal entry with a treble staff starting on a quarter note G4 and a bass staff starting on a quarter note F4. The melody continues with a quarter note A4, a quarter note B-flat4, and a quarter note G4. The accompaniment continues with a quarter note F4, a quarter note E4, and a quarter note D4. The score ends with a double bar line.

46

A musical score for the song 'The Rose Tree'. The score is written for a piano, with a treble and bass staff. The key signature is one flat (B-flat), and the time signature is 4/4. The melody is in the treble staff, and the accompaniment is in the bass staff. The score consists of two measures. The first measure contains the first four notes of the melody and the first four notes of the accompaniment. The second measure contains the next four notes of the melody and the next four notes of the accompaniment. The melody is a simple, catchy tune, and the accompaniment provides a steady, rhythmic foundation.

48

Measures 48 and 49 of a musical score. Measure 48 features a treble staff with eighth-note chords and a bass staff with eighth-note chords. Measure 49 features a treble staff with a half-note chord, a quarter-note chord, and a half-note chord, and a bass staff with a half-note chord, a quarter-note chord, and a half-note chord. The key signature has one flat (B-flat).

50

Measures 50 and 51 of a musical score. Measure 50 features a treble staff with a half-note chord, a quarter-note chord, and a half-note chord, and a bass staff with a half-note chord, a quarter-note chord, and a half-note chord. Measure 51 features a treble staff with a half-note chord, a quarter-note chord, and a half-note chord, and a bass staff with a half-note chord, a quarter-note chord, and a half-note chord. The key signature has one flat (B-flat).

52

Measures 52 and 53 of a musical score. Measure 52 features a treble staff with a half-note chord, a quarter-note chord, and a half-note chord, and a bass staff with a half-note chord, a quarter-note chord, and a half-note chord. Measure 53 features a treble staff with a half-note chord, a quarter-note chord, and a half-note chord, and a bass staff with a half-note chord, a quarter-note chord, and a half-note chord. The key signature has one flat (B-flat).