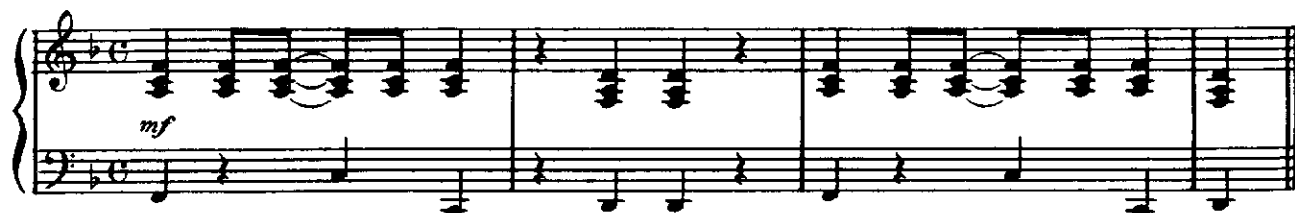


His Latest Flame

Moderately Bright

Words and Music by
DOC POMUS and MORT SHUMAN



Chorus (Tacet)

A ver - y old friend came by to - day,
talked, and I heard him say

The first line of the chorus is written for voice and piano. The voice part is in the treble clef, and the piano accompaniment is in the bass clef. The piano part features a series of eighth-note chords in the right hand and a simple eighth-note bass line in the left hand. The tempo is 'Moderately Bright' and the dynamics are 'mf'.

'Cause he was tell - in' ev - 'ry - one in town - 'bout the love that
— That she had the long - est black - est hair, — the pret - ti - est green eyes

The second line of the chorus continues the melody and accompaniment from the first line. The piano part features a series of eighth-note chords in the right hand and a simple eighth-note bass line in the left hand. The tempo is 'Moderately Bright' and the dynamics are 'mf'.

he just found. And Ma - rie's the name of his lat - est
an - y - where. And Ma - rie's the name of his lat - est

The third line of the chorus concludes the melody and accompaniment. The piano part features a series of eighth-note chords in the right hand and a simple eighth-note bass line in the left hand. The tempo is 'Moderately Bright' and the dynamics are 'mf'.

Copyright © 1961 by ELVIS PRESLEY MUSIC INC., New York, U.S.A.
International Copyright Secured. Made in England. All Rights Reserved.
CARLIN MUSIC CORP., 17 Savile Row, London, W1X 1AE for the British Empire
(excluding Canada, Australia and New Zealand) and the Republic of Ireland, Greece and Israel.

F Dm F 1. Dm *Tacet.*

flame. He talked and

2. Dm C7 Bb C7

Though I smiled, the tears in - side_ were a - burn - in'._

Bb C7 Bb C7

I wished him luck and then he said_ good - bye.

Bb C7 Bb C7

He was gone but still his words_ kept re - turn - in'._

Bb C7 Bb F

What else was there for me to do_ but cry.

Dm F Dm (*Tacet*) F

Would you be - lieve

Dm F Dm F

that yes - ter - day This girl was in my arms and

Dm F Dm

swore to me — Shed be mine e - ter - nal - ly. — And Ma - rie's the

Bb C7 1. F Dm F

name of his lat - est flame.

Dm (*Tacet*) 2. F Bb7 F Bb7 F

A ver - y old flame.